

The Italian census of monumental trees: preserving trees for their ecological value



Zapponi L., Mazza G., Farina A., Roversi P., Sabbatini Peverieri G., Mason F.





- ✓ National Law n.10 14/01/2013 and Ministerial Decree 23/10/2014;
- ✓ Municipalities have to make surveys and assess the status of monumental trees;
- ✓ The surveys are coordinated and supported by the State Forestry Corps and the Ministry of Agricultural, Food and Forestry Policies
- ✓ Target:
 - Single trees and tree lines
 - Shrubs with a remarkable development
 - Native and allochthonous species



There are seven criteria to be included among monumental trees, associated to their value in relation to:

1. Age and size: DBH, height and crown
2. Shape
3. Botanic rarity
4. Achitecture
5. Landascape
6. Historic-cultural-religious
7. Ecological



7

Ecological value:

- It focuses on the animal species that live in the tree, considering their rarity, conservation status, and habitat.
- The tree hosts habitats for several animal groups such as insects, birds, arboreal mammals.
- This quality is more relevant in natural and semi-natural areas, where the conservation of these trees represents a key step to preserve rare and endangered species.



MICROHABITAT



FAUNA



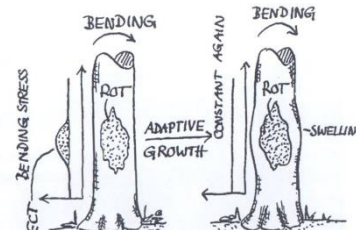
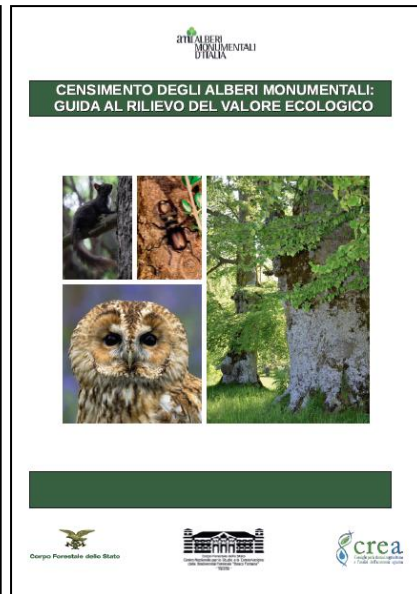
Which species should we include?

- ✓ Saproxylic species and other animals that depend on the availability of tree microhabitats
- ✓ Rare and endangered species (Habitats Directive, Bern Convention, IUCN Red Lists)
- ✓ Alien species



Train staff (regions, municipalities, State Forestry Corps) for the assessment of the ecological value:

- ✓ Recognise microhabitats and species
- ✓ Security issues: stability of veteran trees



NEXT STEPS

- Support local staff with the assessment of the ecological value
- Data analysis
- Citizen science: develop instruments to involve citizens in the survey
- Organise a national meeting on the census and management of monumental trees

